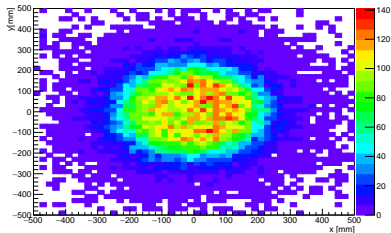
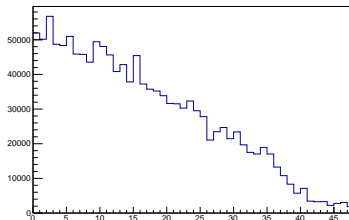


# Beam profile in run 10309 (300 MeV/c $\pi^+$ beam)

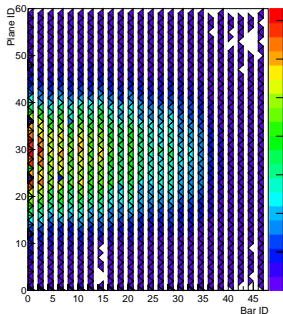
Origin track point (300 MeV/c)



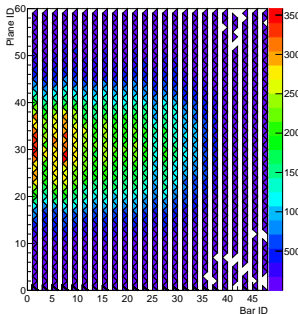
Single-anode PMTs



xz projection (300 MeV/c)



yz projection (300 MeV/c)

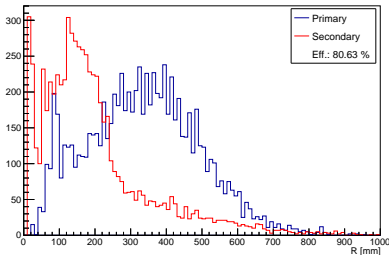


- No dead MAPMT or SAPMT (planes)
- Efficient track recon. (origin profile shows bore)
- Known dead bunch in plane 14 away from beam centre

# Range reconstruction, particle identification

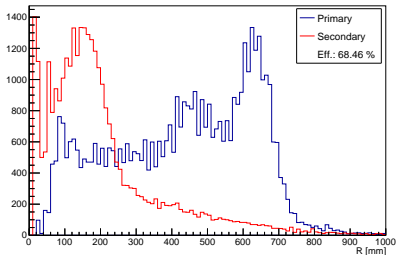
240 MeV/c  $\mu+$

Range in PS (240 MeV/c)

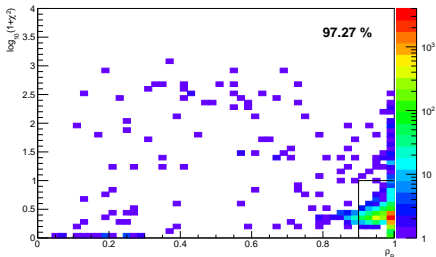


300 MeV/c  $\pi+$

Range in PS (300 MeV/c)



PID variables (240 MeV/c)



PID variables (300 MeV/c)

