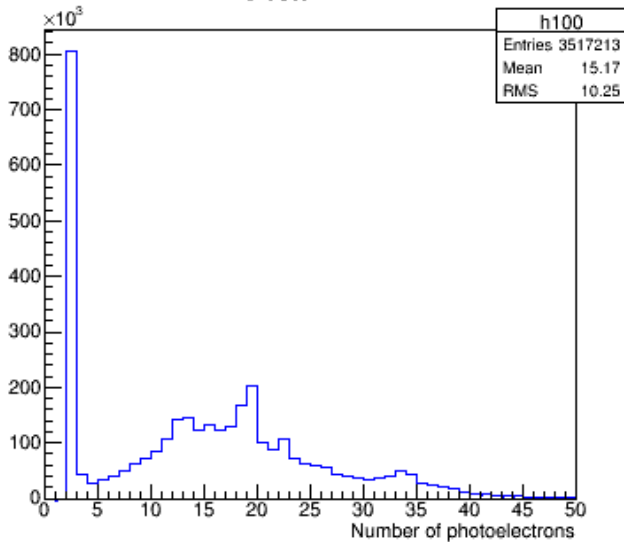


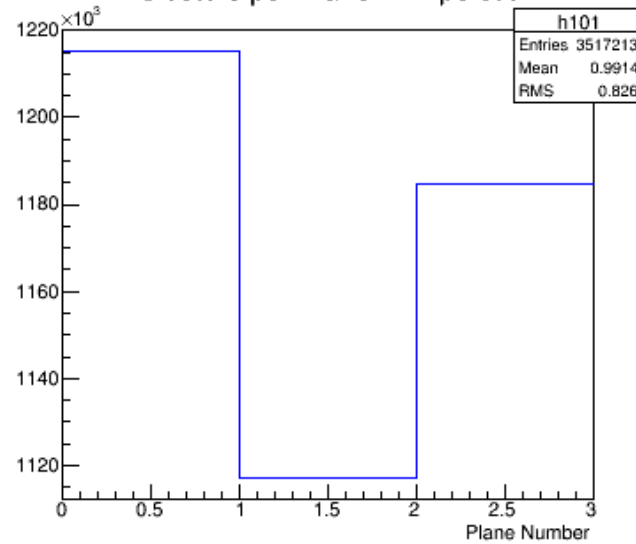
# Tracker 8680 (H4c)

## Clusters - look good

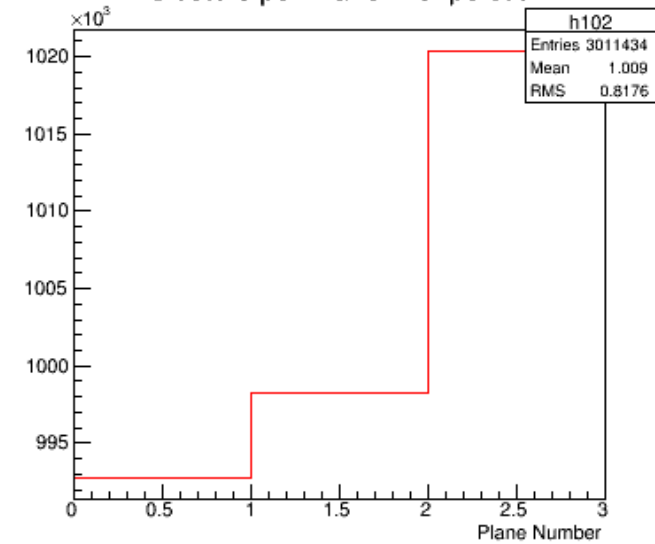
Cluster NPE



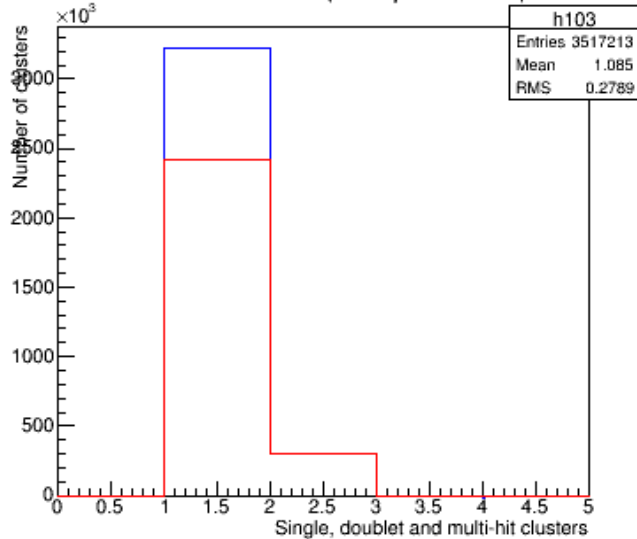
Clusters per Plane w 2npe cut



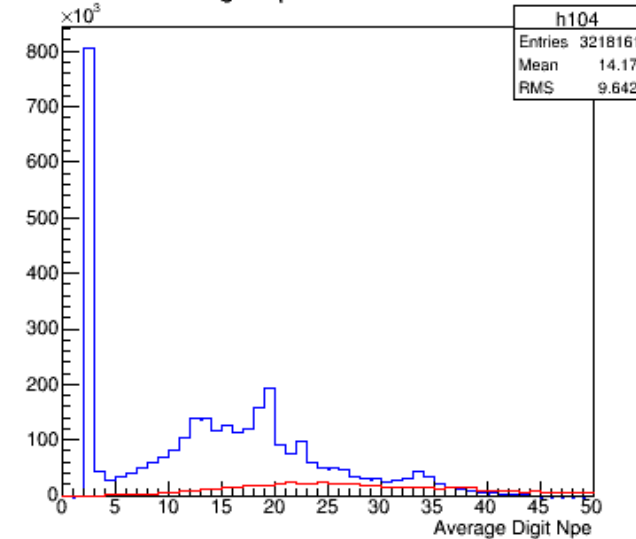
Clusters per Plane w 3npe cut



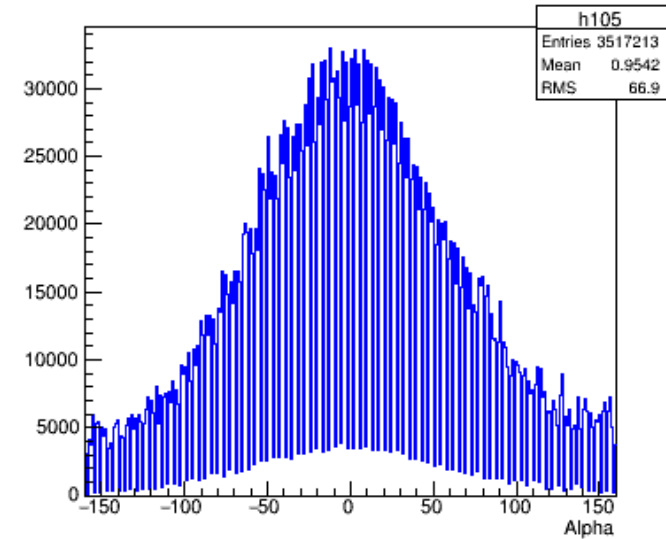
Hits Per Cluster (w 3npe cut red)



Digit Npe Per Cluster

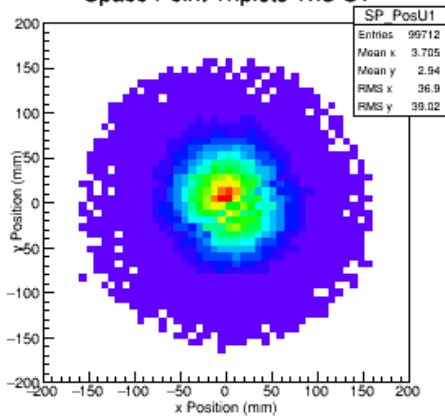


Cluster Position

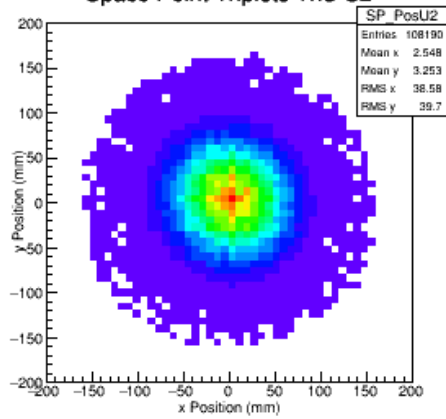


# 8679 H4b Tracker SP US

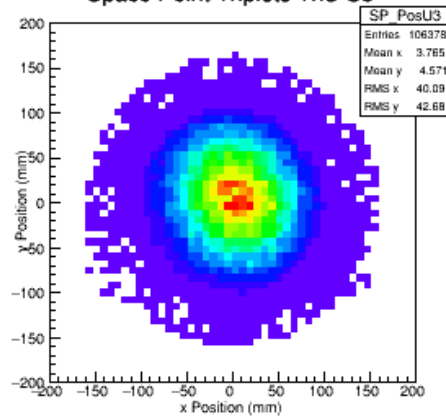
### Space Point Triplets TkU S1



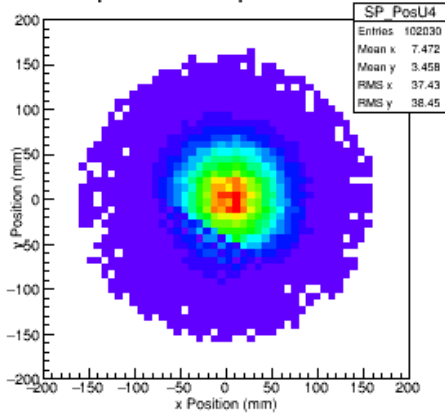
### Space Point Triplets TkU S2



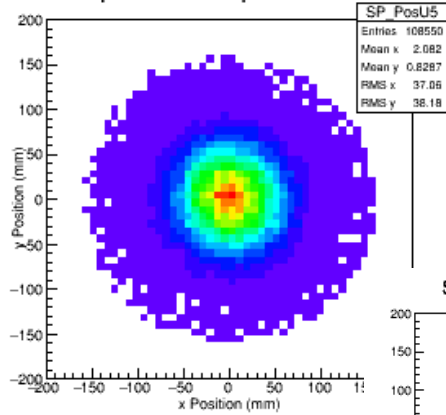
### Space Point Triplets TkU S3



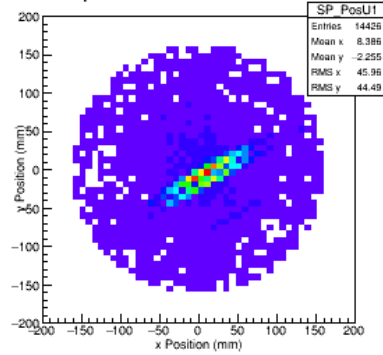
### Space Point Triplets TkU S4



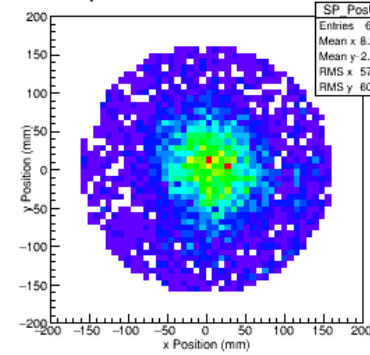
### Space Point Triplets TkU S5



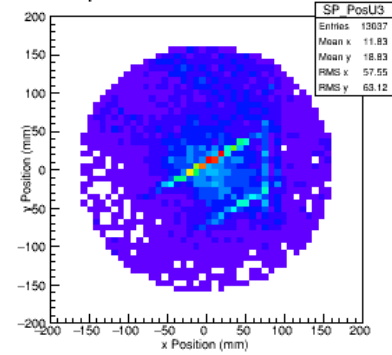
### Space Point Doublets TkU S1



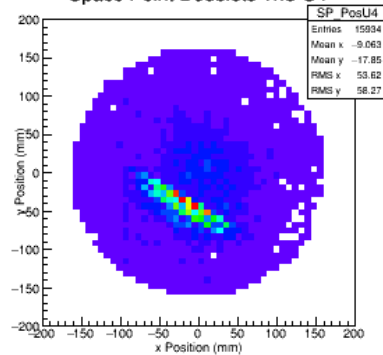
### Space Point Doublets TkU S2



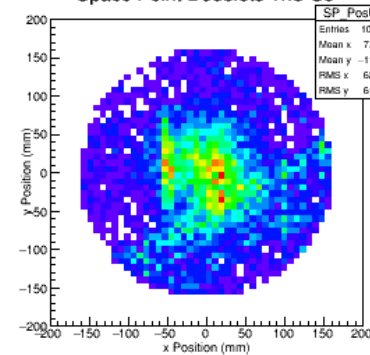
### Space Point Doublets TkU S3



### Space Point Doublets TkU S4

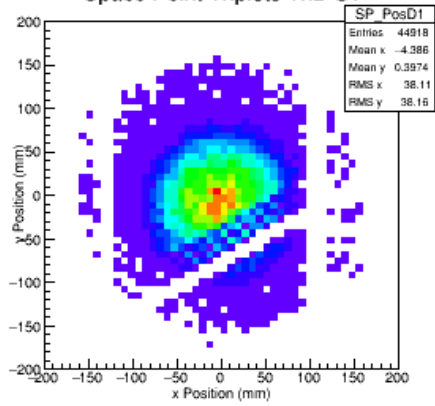


### Space Point Doublets TkU S5

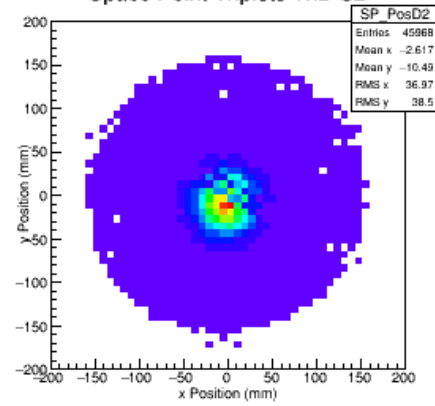


# 8679 H4b Tracker SP DS

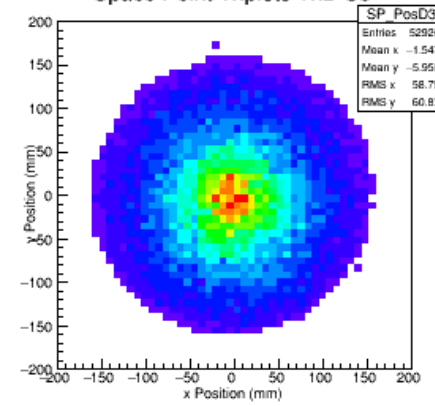
### Space Point Triplets TkD S1



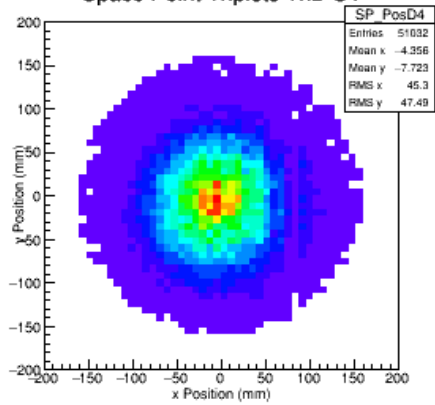
### Space Point Triplets TkD S2



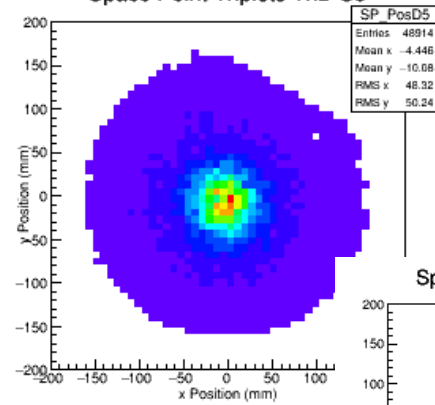
### Space Point Triplets TkD S3



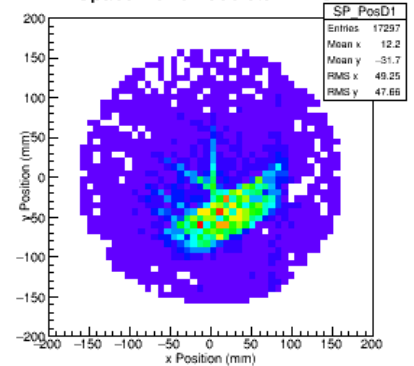
### Space Point Triplets TkD S4



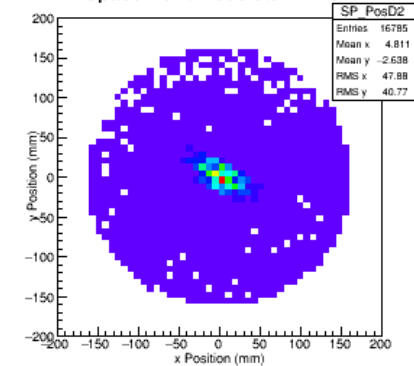
### Space Point Triplets TkD S5



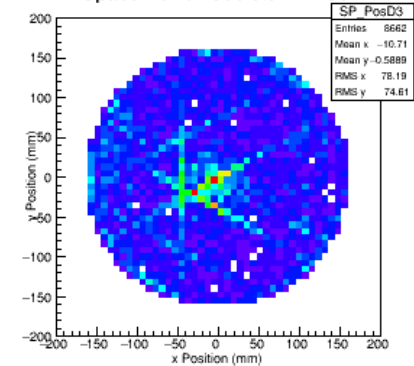
### Space Point Doublets TkD S1



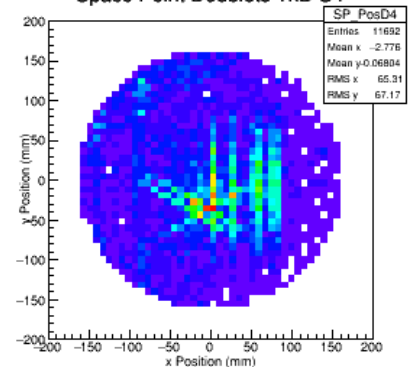
### Space Point Doublets TkD S2



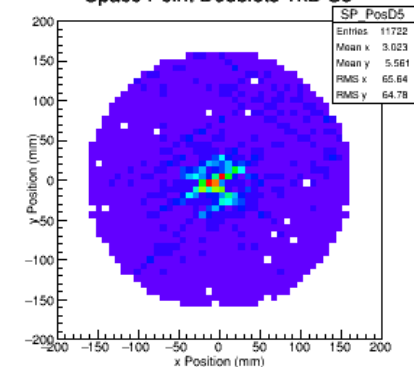
### Space Point Doublets TkD S3



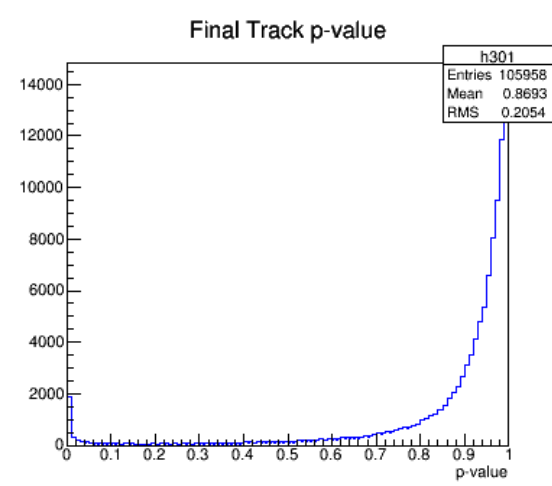
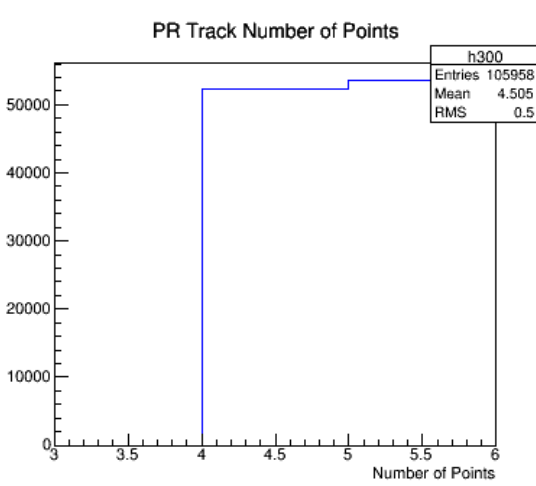
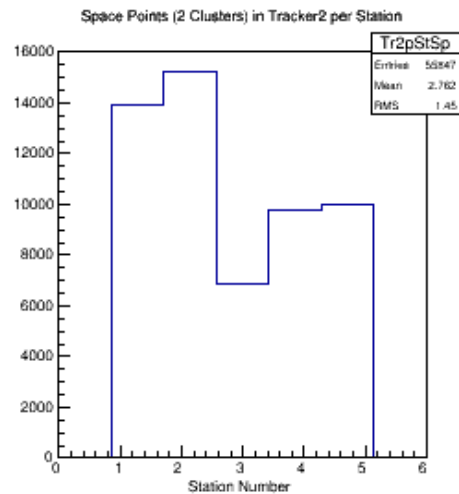
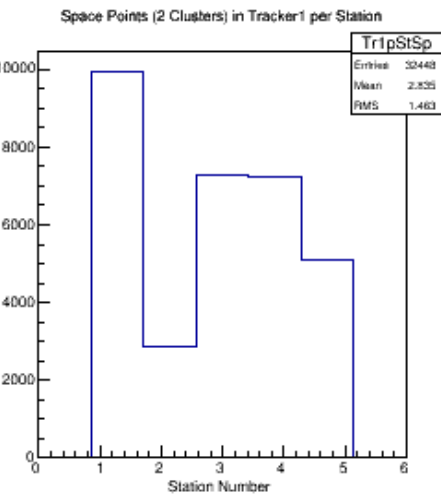
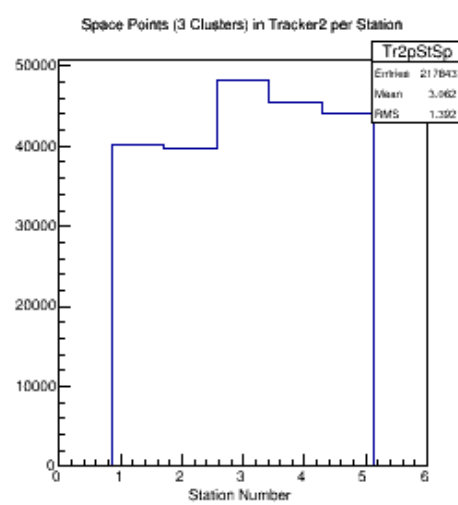
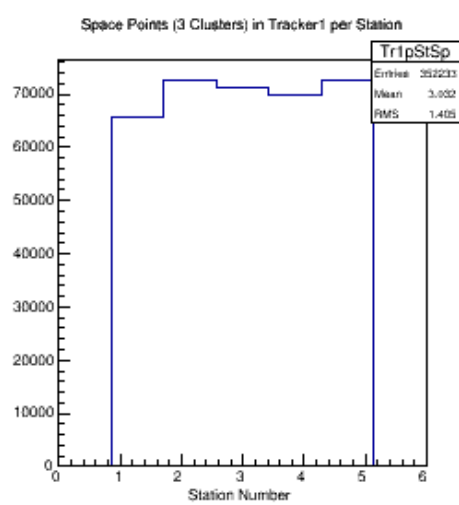
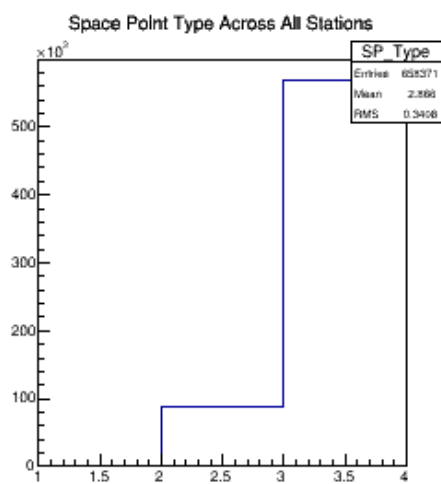
### Space Point Doublets TkD S4



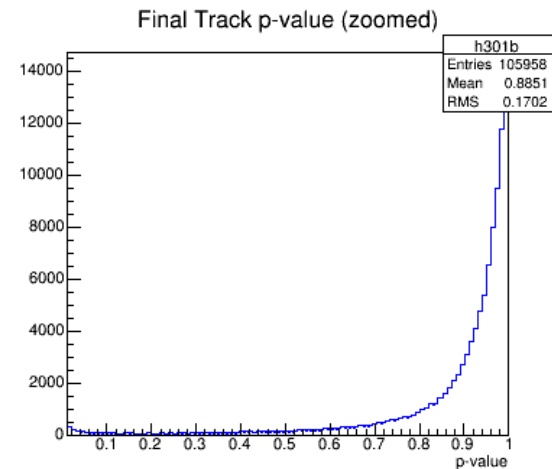
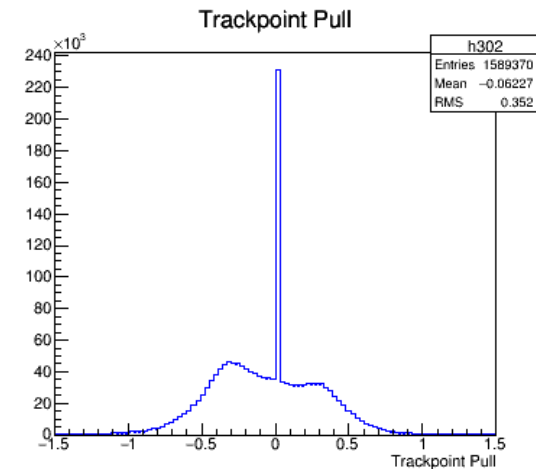
### Space Point Doublets TkD S5



# 8678 H4a



Spacepoints and tracks reconstructing well



All plots for all analysable runs  
available online through

<http://www.hep.ph.ic.ac.uk/~mgeorge/Files/2016MICEData/>

- Inc:
  - Digits
  - Clusters
  - Spacepoints
  - Tracks
  - Kuno plot