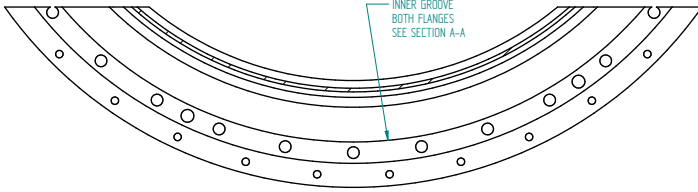
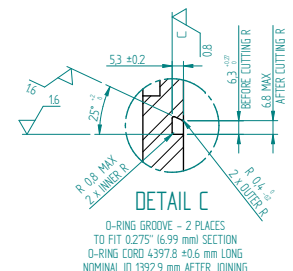
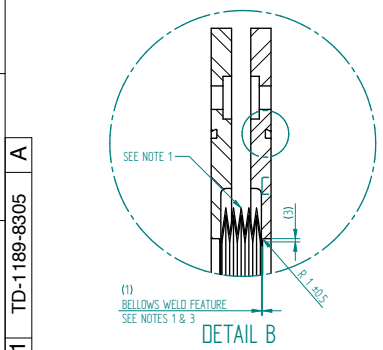


**FOR DISCUSSION ONLY
DRAFT - 24/09/15**

NOTES
 1/ THESE DIMENSIONS AND FEATURES MAY CHANGE DEPENDING ON THE FINAL BELLOWS SPECIFICATION. BELLOWS SUPPLIER TO RECOMMEND BELLOWS SPECIFICATION FOR STFC'S REQUIREMENTS.
 2/ GEOMETRIC TOLERANCES RELATE TO FLANGES BEING FIXED AT NOMINAL 56 mm ACROSS OUTER FACES AND COAXIAL. FOR INSPECTION, FASTENERS, DOWELS (TD-1189-8338) AND PACKING WILL BE USED TO CORRECTLY SEPARATE AND CO-LOCATE FLANGES. FASTENERS DOWELS AND PACKING WILL BE FITTED FOR TRANSPORTATION TO PREVENT STRAIN ON BELLOWS SECTION.
 3/ WELD TYPE, SIZE AND PREPARATION INFORMATION TO BE SUPPLIED BY BELLOWS SUPPLIER & AGREED WITH STFC. WELD TO BE LEAK TIGHT TO 10⁻⁸ mbar/L/s.



SECTION D-D

LINEAR DIM:	0.5 - 3	3 - 6	6 - 30	30 - 120	120 - 400	400 - 1000	+1000 - 2000
LINEAR TOL:	+0.1	+0.1	+0.2	+0.3	+0.5	+0.8	+1.2
ANGLED FEATURE LENGTH:	0 - 10	10 - 50	50 - 120	120 - 400	400		
ANGULAR TOL:	+1°	+0°30'	+0°20'	+0°10'	+0°5'		

ISO 2768-m

A Error: No reference		J S TARRANT		Error: No reference		Error: No reference		MANUFACTURE ONLY WHEN STATUS IS RELEASED		Error: No reference	
ISSUE	DATE APPD	MOD. No.	DRAWN BY	CHKD BY	APPD BY	STATUS		SURFACE TEXTURE		3.2 μm	
PROJECTION		TOLERANCES UNLESS STATED		MATERIAL & SPEC.		FINISH		CLEAN		REMOVE ALL BURRS	
DRAWING CONFORMS TO BS 8888 TOLERANCING ISO 8015		MASS 210.234 kg		STAINLESS STEEL 316							
DIMENSIONS IN mm UNLESS STATED						USED ON TD-1189-8306					
PROJECTS & MECHANICAL ENGINEERING GROUP (PAL)						HARWELL SCIENCE & INNOVATION CAMPUS, RUTHERFORD APPLETON LABORATORY, CHILTON, OXON, OX11 0QX					
DEVICE ADJ BELLOWS ASSY MIICE INTEGRATION ENGINEERING						A1 TD-1189-8305 SHEET 1 of 1 A					
						MICE DATE:					