

Action

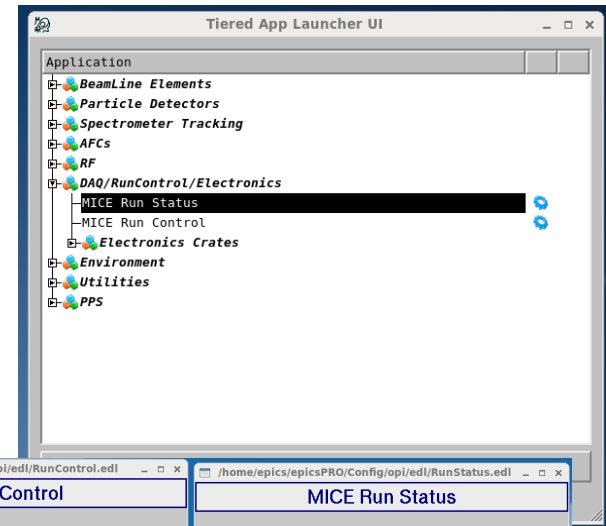
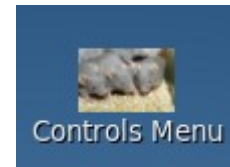
Starting Run Control GUI:

1. If the Tiered App Launcher UI is not already open, double click on the “Controls Menu” button on the desktop to open the menu.
2. Navigate to the heading “DAQ/RunControl/Electronics” heading and expand the menu.
3. Open “MICE Run Control” and “MICE Run Status”
 - “MICE Run Status” allows for monitoring run conditions

Notes:

1. You should not have more than one copy of Run Control active in the MLCR at a time.
2. The **blue** gear icon means the program is already running on the computer, if you can not find it, press the Kill button and try starting Run Control again.
3. The **red** 'x' means there is a problem opening the program, usually, this means there is already a version running on this computer. Try pressing the Kill button.

Expected Result



	Spill: 4109	Integrated
Particle Triggers	16	48933
Requested Triggers	19	68935
GVa1 Triggers	1	4118
ToF0 Triggers	94	332831
ToF1 Triggers	19	68935
ToF2 Triggers	4	24115
LMC-12 Count	2189	7459817
LMC-34 Count	2123	7102240
LMC-1234 Count	374	1104227
ISIS S7-3 Loss	1.03	1.18 ± 0.00
ISIS S7-4 Loss	0.82	0.93 ± 0.00
ISIS S8-1 Loss	1.27	1.48 ± 0.00
ISIS Total Loss	3.50	3.60 ± 0.00
		Average

Action

Controlling the Run:

1. Press the “**Begin Run**” button, and follow the series in descending order, filling out each section as instructed in the Run Plan
(<http://micewww.pp.rl.ac.uk/projects/operations/wiki/RunPlans>)
 - See next page for comments on different run types
3. Enter a short run comment
 - Watch for special characters in comments! This will cause a failure to upload run conditions to CDB.
2. Press “**Start Process**”, this begins the DAQ arming, this process takes about 30 seconds.
3. Once the DAQ is ready, the “**Start Run**” button appears, press that to begin the run.
4. At the end of the run press the button “**Stop Run**”, make sure to enter an end-of-run comment into the “**Comment**” field and **PRESS ENTER** before starting a new run.
 - Watch for special characters in comments!

Notes:

1. Press the “**Reset**” button to start entering command again.
2. If RC launches and all the fields are empty (white boxes) this means the IOC is not running. For instructions call:
 - Chris Heidt – 0744 564 2819
 - Pierrick Hanlet – 0794 886 0197

Expected Result

- If for any reason you need to check a IOC variable you can do so with the “caget” command from the terminal. Find the variable name by middle clicking the GUI on the field that contains the variable output
 - caget MICE-SYS-NUM:NAME

