



# Collaboration Board at CM41 Summary

**Alain Blondel**



## **Collaboration board meeting 41**

**Tuesday 10 February 2015 RAL**

**CR12/13, R68, Rutherford Appleton Laboratory, 17:30-18:30**

### **DRAFT AGENDA**

1. **Presence and proxys.**
2. **Actions and minutes from previous collaboration meeting.**
3. **Matters arising and Adoption of agenda**
4. **Spokesperson's remarks & Executive Board report – Ken Long (10 min)**  
– initial conclusions of the revision process of the MICE constitution
5. **Project Manager's report – (Preece) (10 min)**
6. **Preparations for Data taking (Boyd)- (10 min)**
7. **Request from Belgrade to Join MICE (Dimitrije Maletic)**
8. **Request from IHEP/Sichuan to Join MICE (Jingyu Tang)**
9. **Common fund status (Soler/Ricciardi) (5 min)**
10. **Funding updates:**  
UK: Soler, US: DOE (Bross)/NSF(Kaplan), INFN: Bonesini , Switzerland: Blondel , others
11. **Future CM dates and organization (5 min)**
12. **AoB**



Collaboration board meeting 41  
Tuesday 10 February 2015 RAL  
CR12/13, R68, Rutherford Appleton Laboratory, 17:30-18:30

**DRAFT AGENDA**

1. Presence and proxys. 5 absent, 5 proxys, 3 on phone Quorum OK
2. Actions and minutes from previous collaboration meeting. Minutes approved
3. Matters arising and Adoption of agenda agenda adopted, no A.o.b.
4. Spokesperson's remarks & Executive Board report – Ken Long (10 min)  
– initial conclusions of the revision process of the MICE constitution
5. Project Manager's report – (Preece) (10 min)
6. Preparations for Data taking (Boyd)- (10 min)
7. Request from Belgrade to Join MICE (Dimitrije Maletic)
8. Request from IHEP/Sichuan to Join MICE (Jingyu Tang)
9. Common fund status (Soler/Ricciardi) (5 min)
10. Funding updates: status was given  
UK: Soler, US: DOE (Bross)/NSF(Kaplan), INFN: Bonesini , Switzerland: Blondel , others
11. Future CM dates and organization (5 min) submission of NSF request  
submission of EU-ITN proposal
12. AoB future:  
funding request for UK completion of MICE



## Future collaboration meetings:

- **2015:**
  - RAL: CM41 09th to 11th February 2015
  - RAL: CM42 22nd to 24th June 2015
  - FNAL: CM43 28th to 31st October 2015
- **2016:**
  - CM44 15th to 19th February 2016
  - CM45 20th to 24th June 2016
  - CM46 03rd to 07th October 2016
- **2017:**
  - Will bring a proposal to the next CB



## From Spokesperson report

1. **rebaselining of experiment** was supported at CM40 and supported by RSLR, MPB, FAC

2. **on personnel:** Paul Smith left collaboration

*Paul has done outstanding work for target (as PhD) and MICE online!*

David Adey got job at Fermilab

*David has contributed greatly to tracker!*

Yordan agreed to take online group leadership, **(CB endorsed)**  
**but need for a second DAQ expert has been clearly identified.**

3. **Progress and completion of Step IV installation**

Huge progress.

For external groups (not RAL) it is essential to prepare well ahead

-- connect with project manager (Preece)

-- get into 'job card system'

-- encourage MICE members to be more present at RAL to get acquainted

Mock data run reveals need of presence of collaborators at RAL

**CB took note**



## From Spokesperson report (II)

### OPERATIONS

#### planned data taking

-- Shifter sign up on CHEESE is GOOD (not fully complete though)  
see later slides : 62 potential shifters need ~18 shifts per person over  
~1 year of data taking.

-- may allow running experiment 24/7.

**CB enthusiastic to take data!** Would like to see a plan that ensures maximal use of resources and time in terms of quality of measurements.  
It was agreed that this would be circulated to CB asap.

**C. Rogers will organize a meeting in March to gather the factors that will determine the run plan**

**Produce draft run plan for collaboration (and then the MPB etc...)**

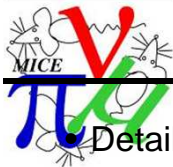


## From Spokesperson report (III)

**Steps being taken to revise the MICE constitution**  
(MIPO, MEMO; moving to operations etc..)

J. Dainton is taking lead on this, contacts with STFC to raise profile of MICE





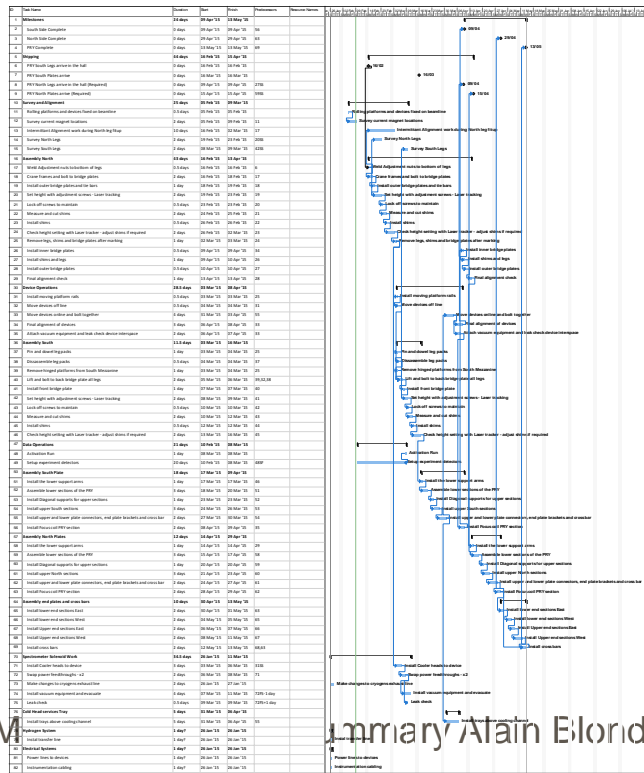
# Hall work



Detailed schedule of installation is being build

- Interaction between many teams of mechanical and electrical
  - During the PRY plate installation long working days will be in action
- Heavy equipment being installed
- **We must be safe in the hall and so general walk about will not be allowed**
- **A job card system has been introduced**
  - Any work for the hall must be put through the job card system, either mechanical or electrical
  - An online program is being used at the moment with a small group to test the system
  - Will be rolled out to a wider team soon
  - Available in any browser
  - IOS app

**From Project manager report (R. Preece)**







## S. Boyd presented shift sign up statistics.



▶ In 24/7 running : two shift streams staggered by 2 hours



**Default is: sign up in block of 5 shifts**

62 CHEESE shift-takers so far

ISIS User Run Period	Days	CR Shifts (24/7)	Shifts/shifter
1	12	48	
2	54	324	5.2
3	38	228	3.7
4	45	270	4.4
1	45	270	4.4
Total	194	1140	18.5
MOM		390	
Total	194	1530	25

Shifts will be allocated to institutes according to the number of people associated with that institute

**All MICE members must do at least half of their personal shift allocation**

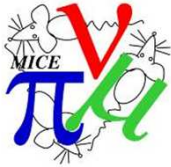
**All institutional shift loads must be met in full**

24/7 running seems feasible as long as everyone can commit to their shift allocation

**if not → don't sign papers**



# New institutes in MICE



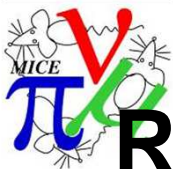
# Institute of Physics, University of Belgrade



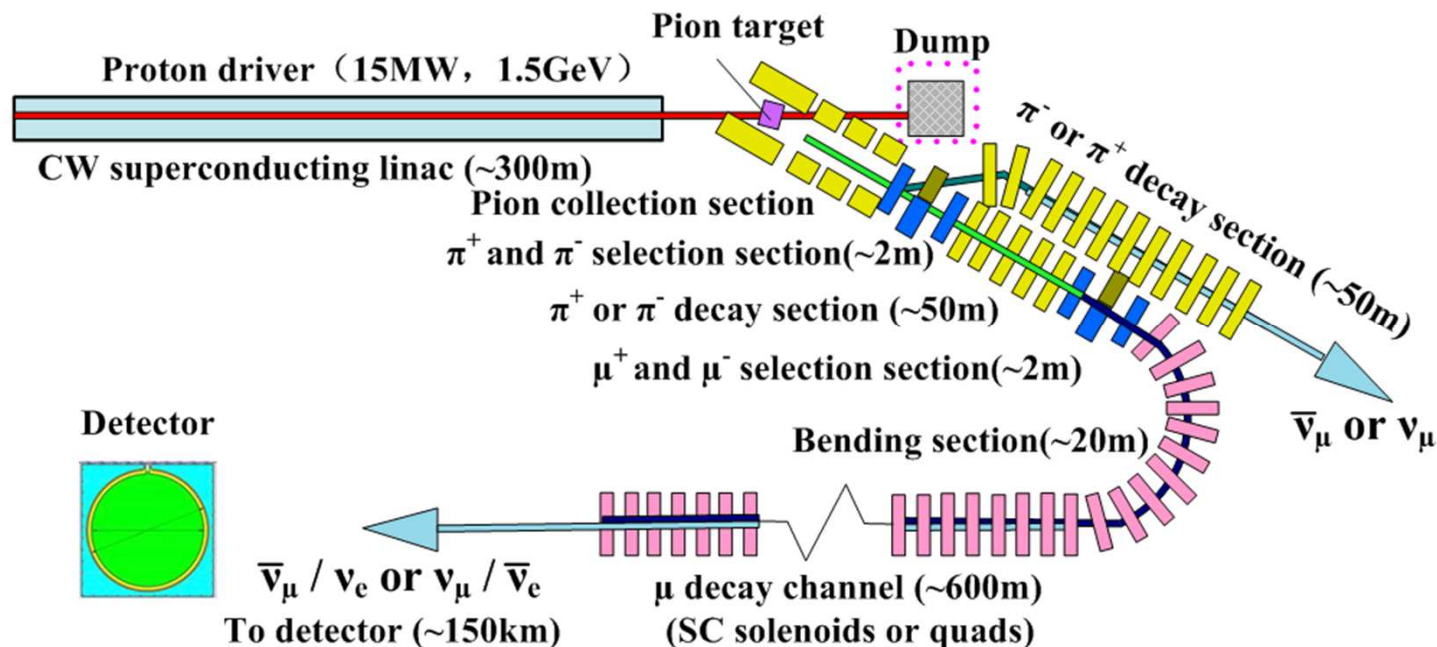
Two Senior Research Associates  
One Research Associate  
Two PhD students

Dr. Vladimir Udovicic, Senior Research Associate  
*Head of the Low Background Laboratory*  
Dr. Dimitrije Maletic, Senior Research Associate,  
*Spokesperson for the group*  
Dr. Dejan Jokovic, Research Associate  
MSc Mihailo Savic, PhD student  
MSc Nikola Veselionovic, PhD student

- **Detector simulation and Analysis**
  - e.g. MC studies and validations
- **Data processing**
- **Working on experiment software**  
Event display as part of Online analysis tools.



# Request to join MICE collaboration from MOMENT (IHEP and Sichuan Uni.)



a muon decay neutrino beam!

Jingyu Tang (Institute of High Energy Physics)  
Prof. Zihui Li (Sichuan U.)  
+ PhD student

shifts, beam dynamics modeling,  
data analysis, paper writing.  
possibly add more persons in the future.



**The Collaboration Board Unanimously welcomed**

- the Institute of Physics, University of Belgrade
- The Institute of High Energy Physics, Beijing  
and  
Sichuan University

**in the MICE collaboration**