



# MICE Computing - Status

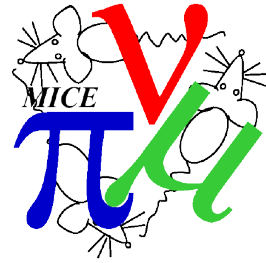
---



Chris Rogers,  
ASTeC,  
Rutherford Appleton Laboratory

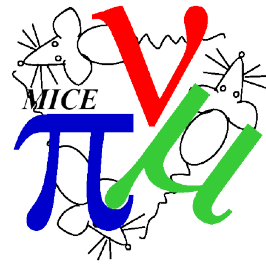


# Project Goal



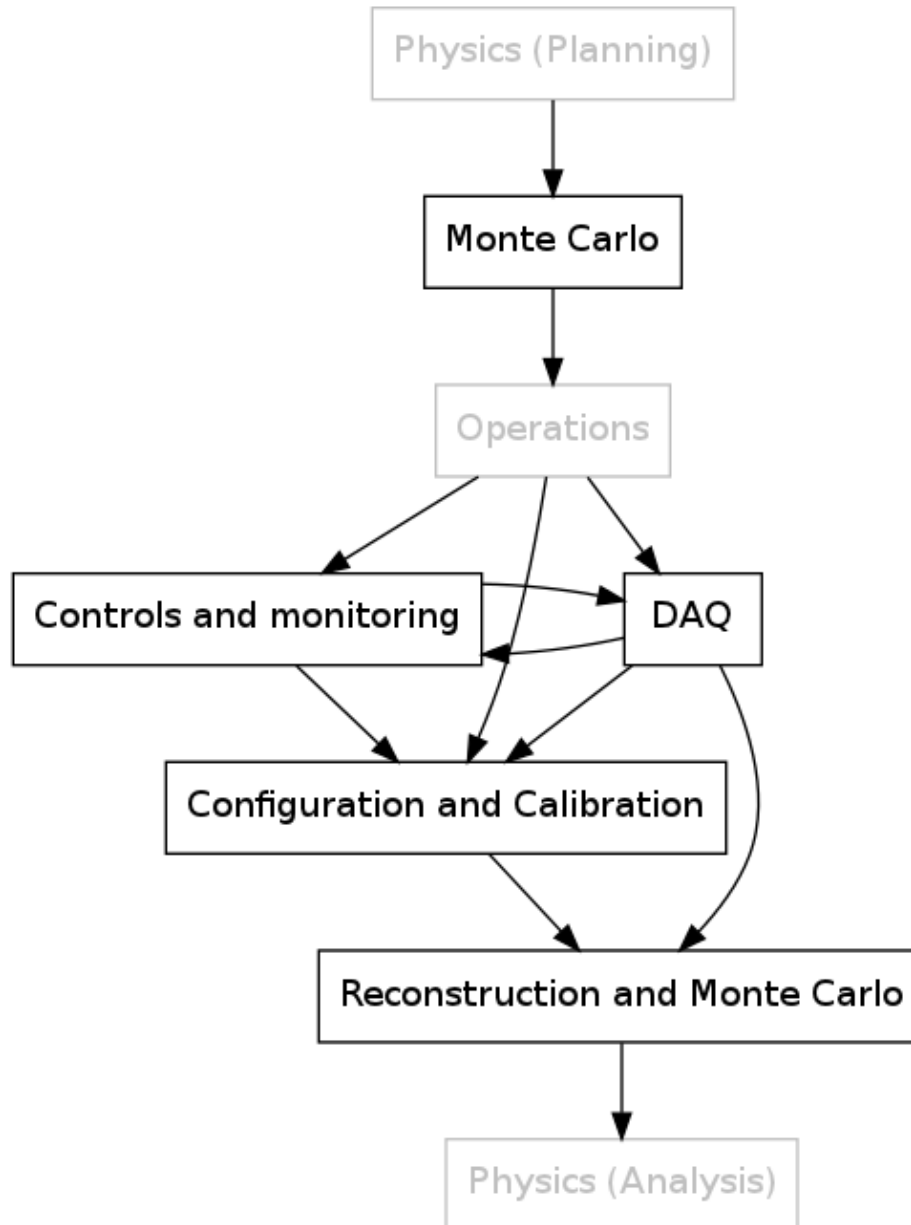
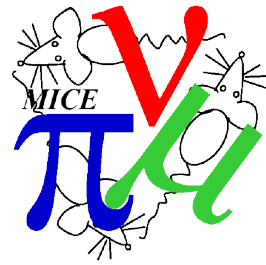
- Aim of the computing project
  - Provide reconstructed data for physics analysis
  - Provide experimental monitoring and controls
- End product
  - A set of GUIs in the control room to control the experiment
  - A set of reconstructed data for analysis users

# Methodology

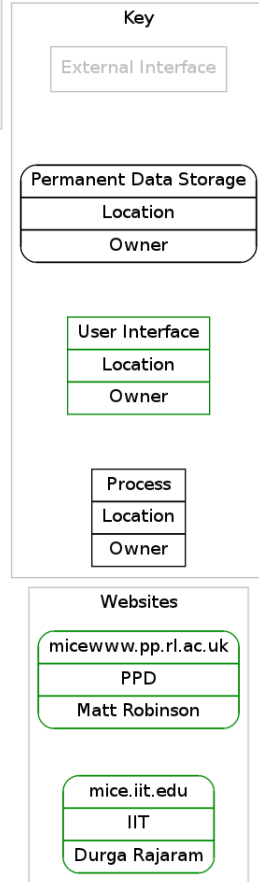
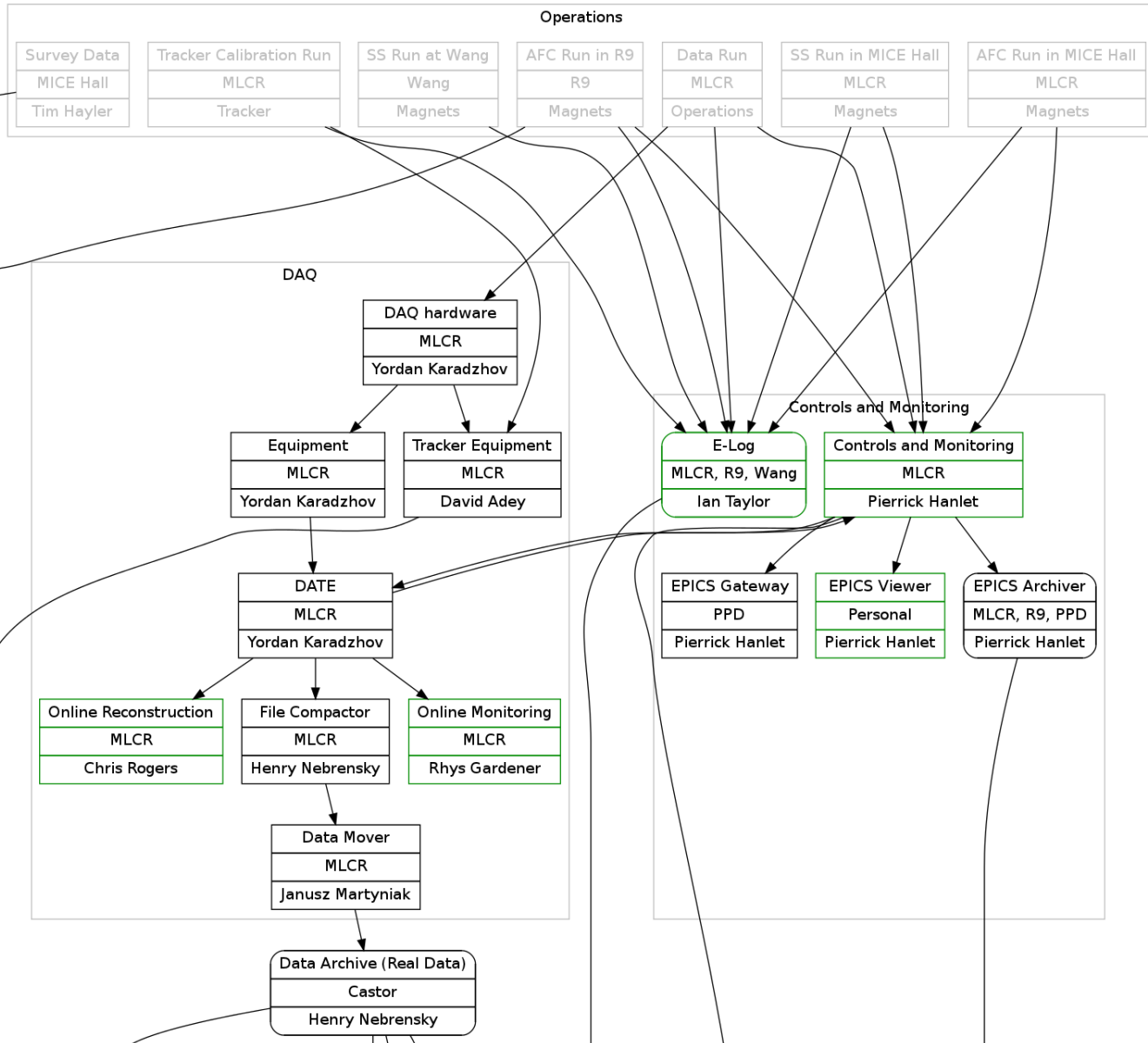


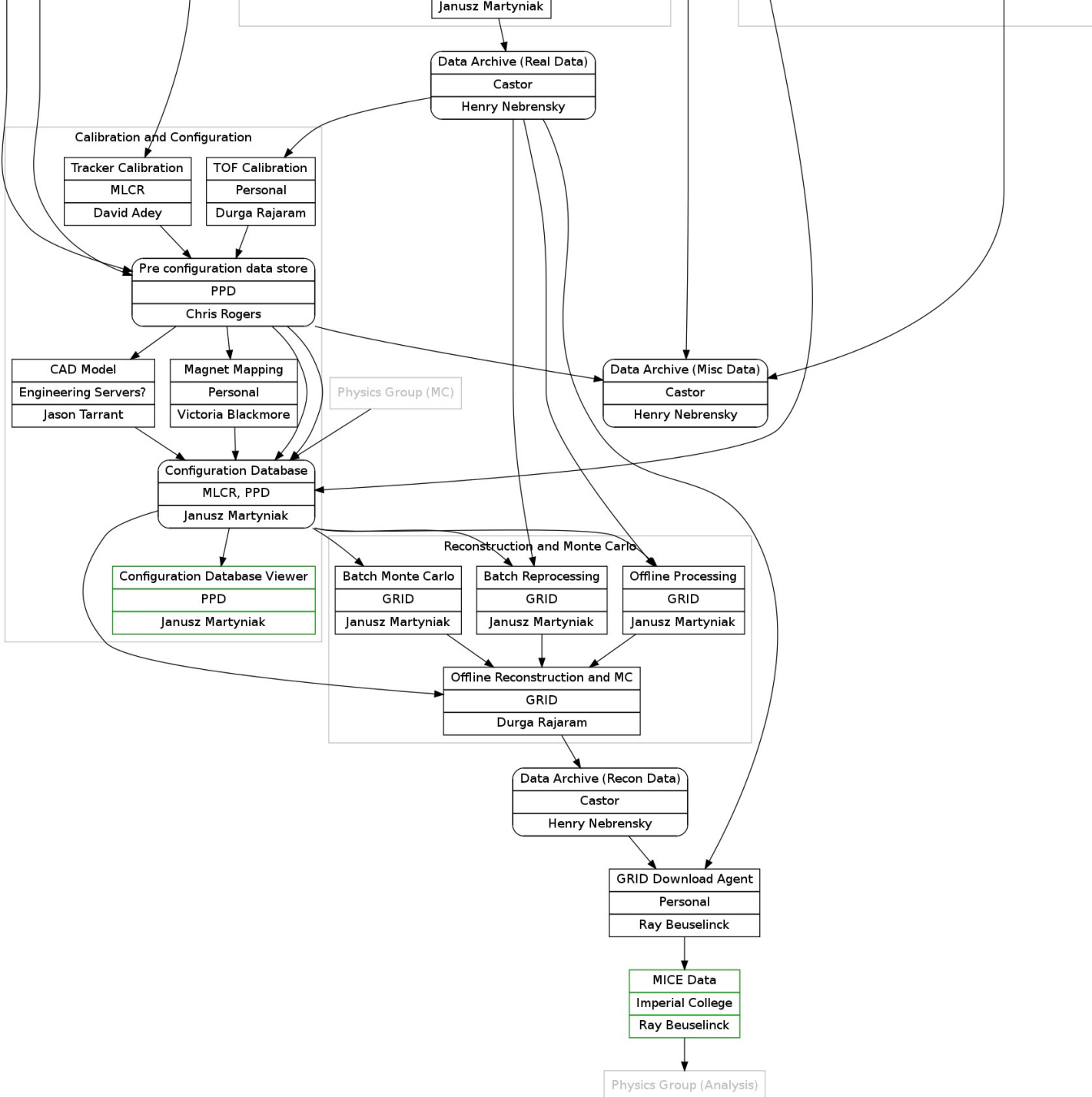
- Aim to be
  - Reproducible
  - Reliable
  - Correct
- This means
  - Audit trail
    - Which code was used? Which calibration? etc
  - Testing
    - Once it works it should not break
  - Written procedures and documentation
    - How did they do that?
  - Frequent reviews
    - We share the risk and responsibility to get it right

# Process Specification

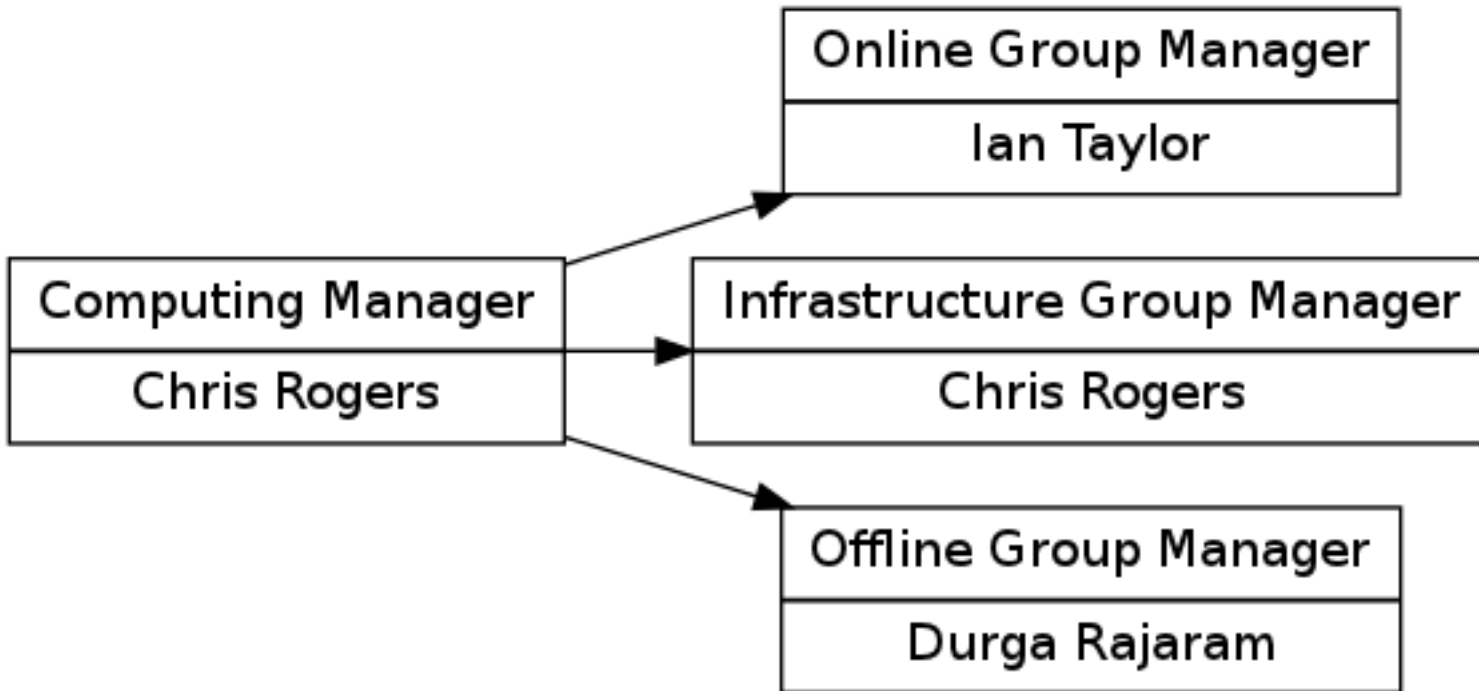
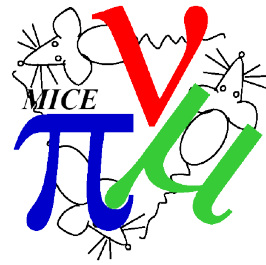


# Process Specification (2)

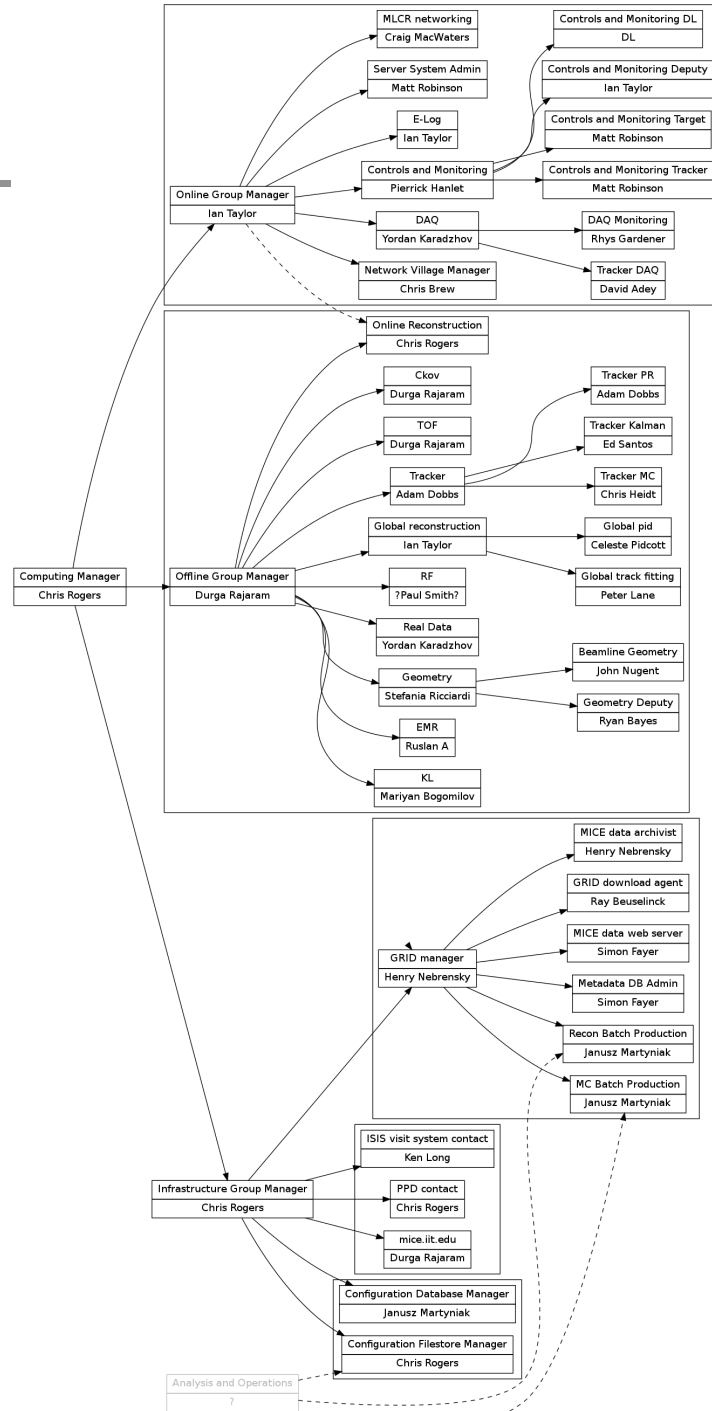
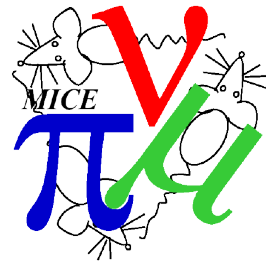




# Top level WBS

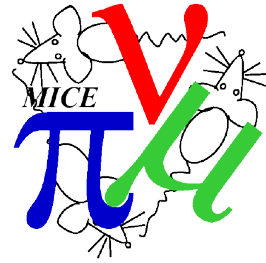


# Full-ish WBS





# Project Plan



- Project plan is under construction
  - We have a more detailed WBS, missing some names
  - Assigning times to the WBS
  - Additionally there are a number of “operational” tasks
  - Aim to have first draft in place by “christmas”

# Risk Assessment



- We have a risk assessment since July
- It probably needs a second iteration
- Mostly risks are at the level “need to retake data” and “slow analysis”
- Two at level of “risk to personnel/equipment”
  - Someone breaks into MLCR and causes damage
    - Need a better lock
  - Hardware interlock fails in conjunction with control software failure
    - Note hardware owners have principle responsibility in this instance