

PropertyDouble G4StepMax 5.0 mm

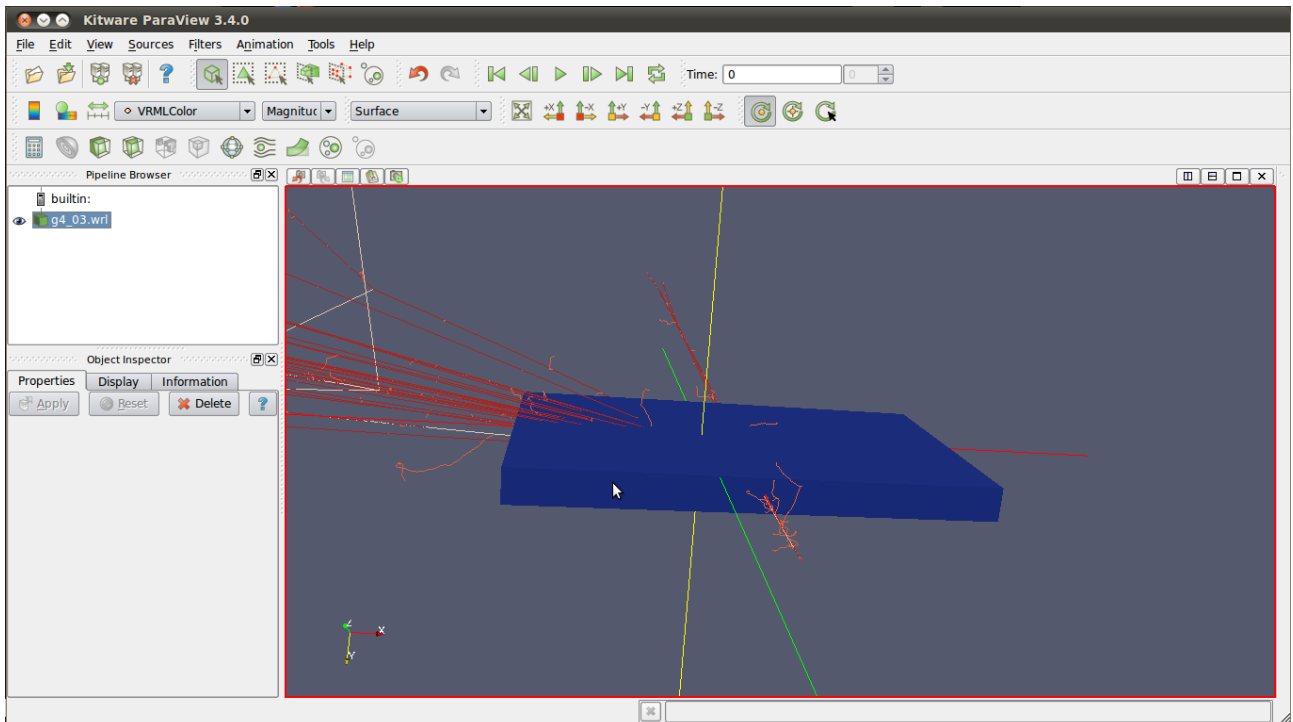
Module D2

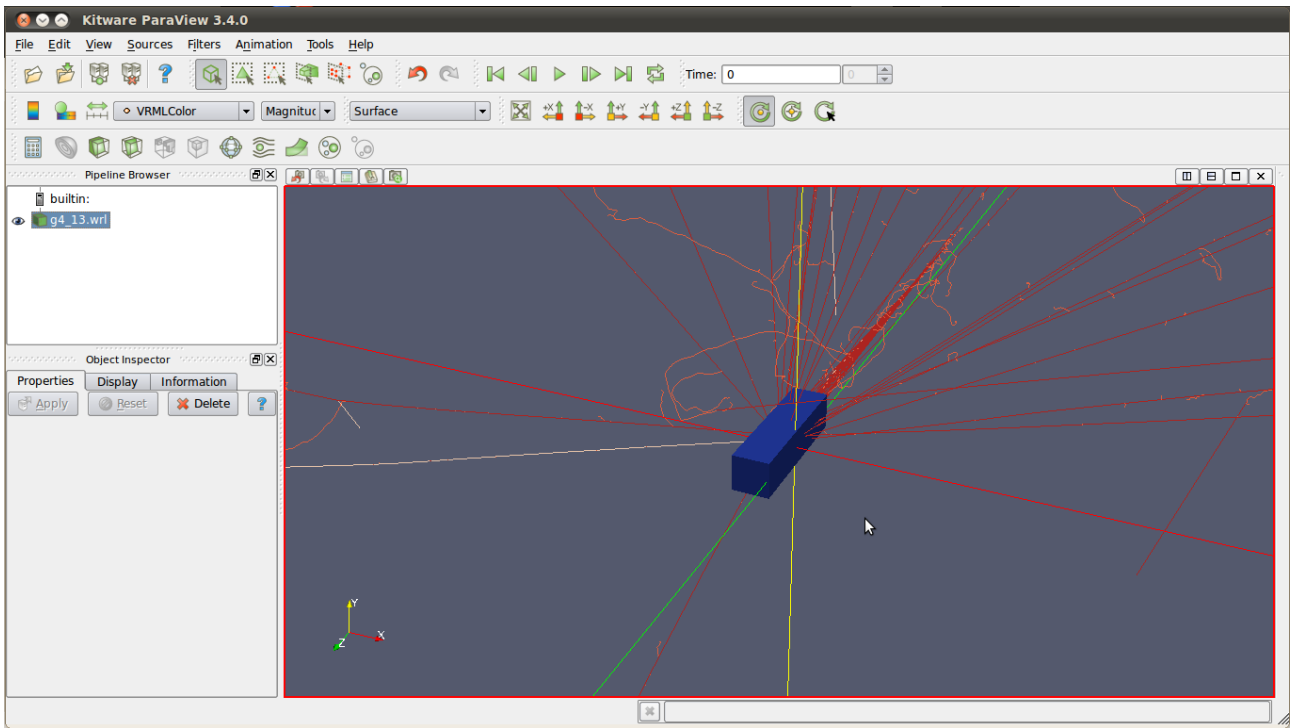
```
{  
  Position 0 0 1000 mm  
  Rotation 0 -15 0 deg  
  Volume Box  
  Dimensions 990 110 1500 cm  
  PropertyString FieldType MagneticFieldMap  
  PropertyString FieldMapMode Read  
  PropertyString FileType g4bl3dGrid  
  PropertyString FileName ${MAUS_ROOT_DIR}/src/legacy/FILES/Models/Modules/BeamLine/B1_6inch.table  
  PropertyString Symmetry Dipole  
}
```

Module Q4

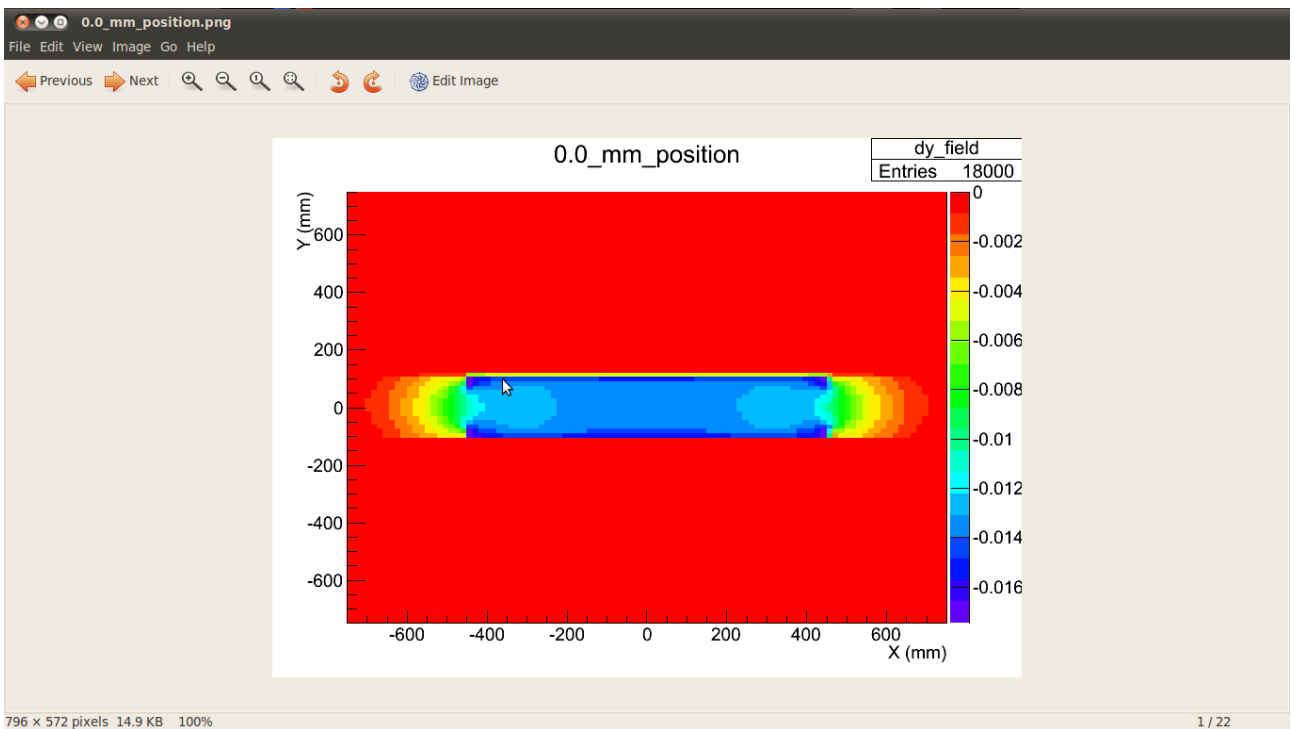
```
{  
  Position 1867.31 0.0 0.0 mm  
  Rotation 0.0 90.0 0.0 deg  
  Volume Box  
  Dimensions 0.5 0.5 2.0 m  
  PropertyString FieldType Multipole  
  PropertyInt Pole 2  
  PropertyDouble FieldStrength 1 m  
  PropertyDouble Height 0.5 m  
  PropertyDouble Width 0.5 m  
  PropertyDouble Length 2.0 m  
  PropertyString EndFieldType Tanh  
  PropertyDouble EndLength 0.12528 m  
  PropertyDouble CentreLength 0.330899 m  
  PropertyInt MaxEndPole 4  
}
```

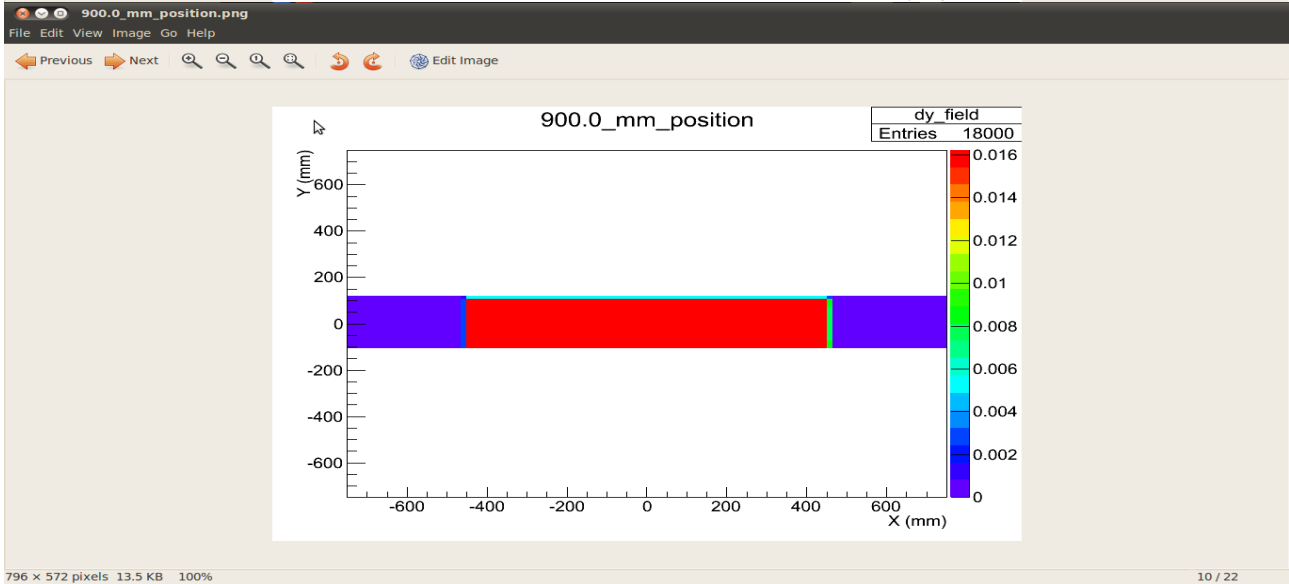
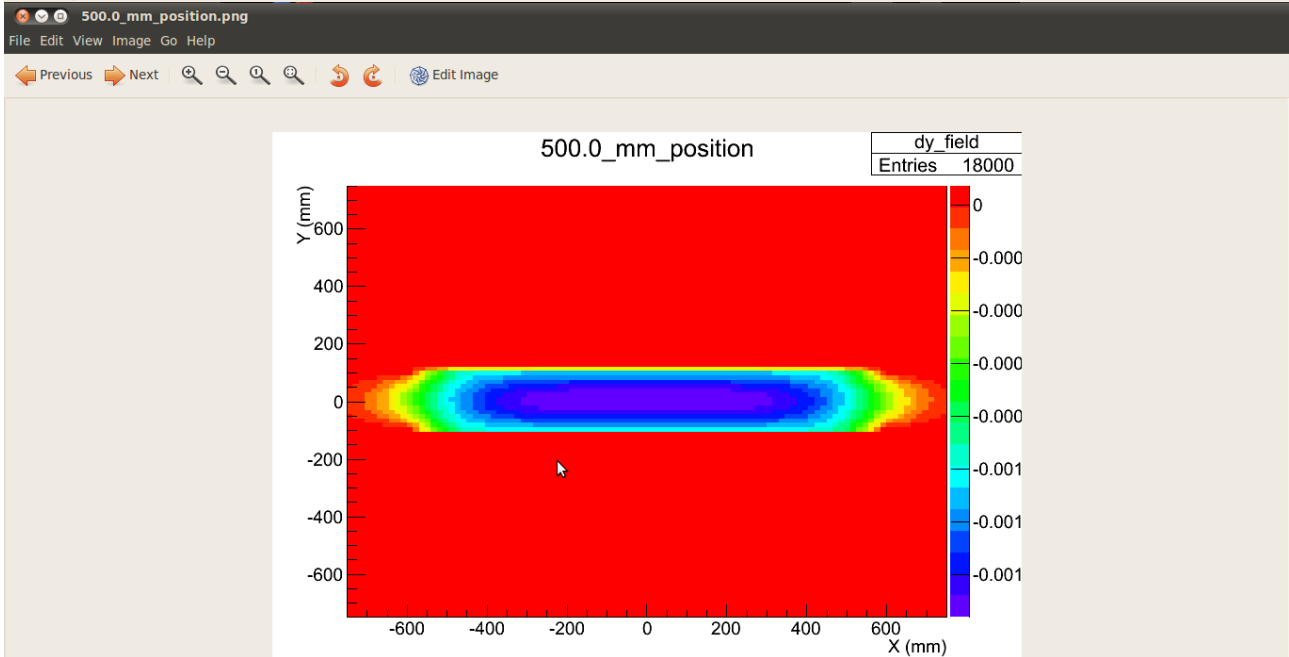
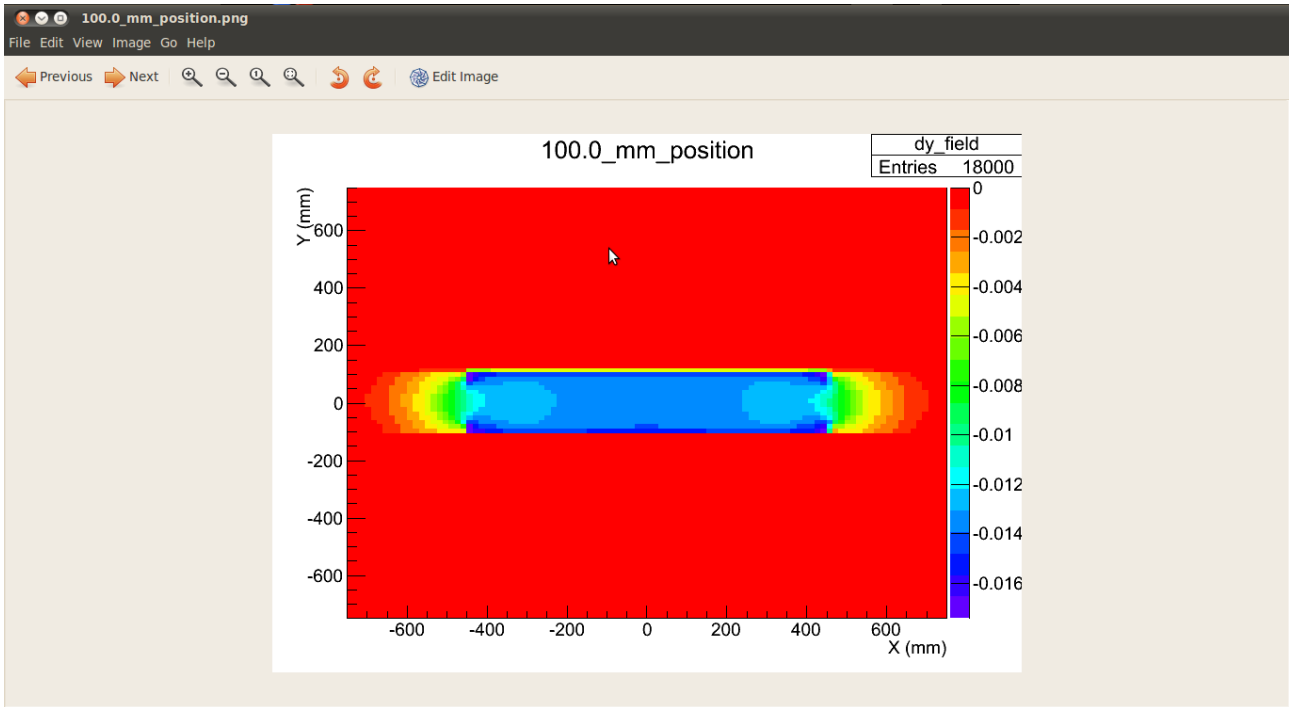
1



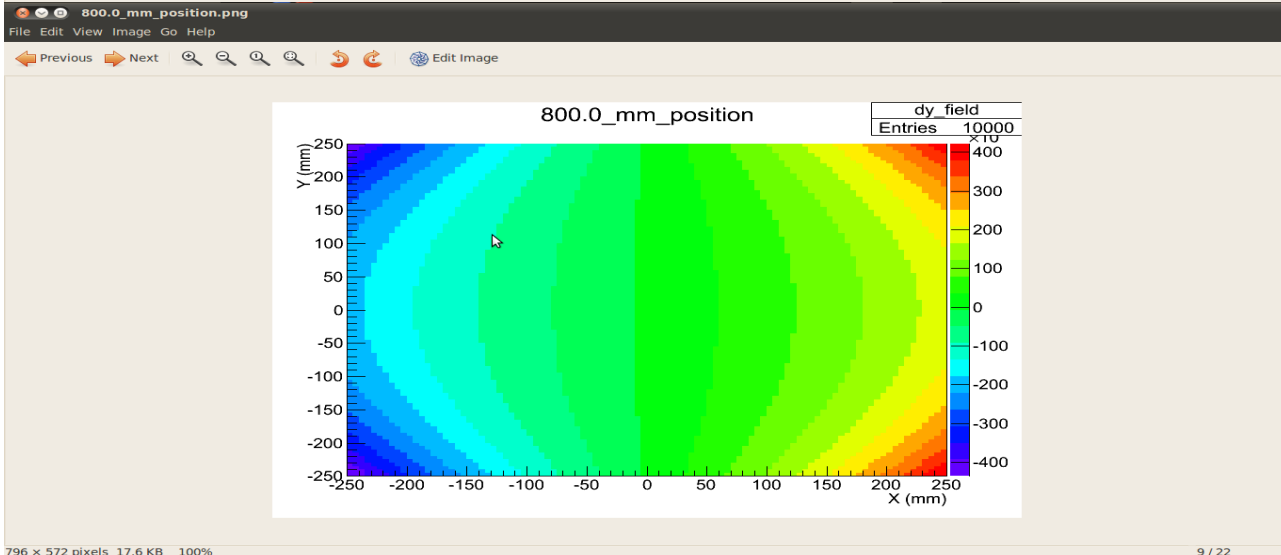
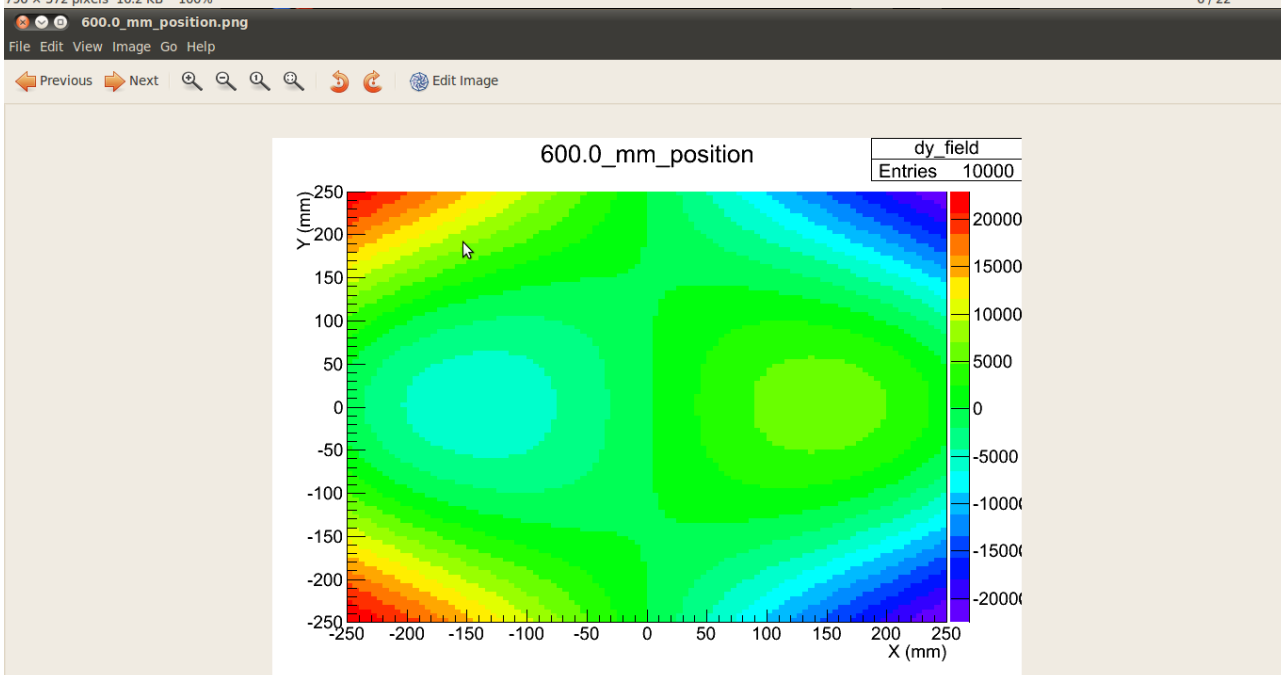
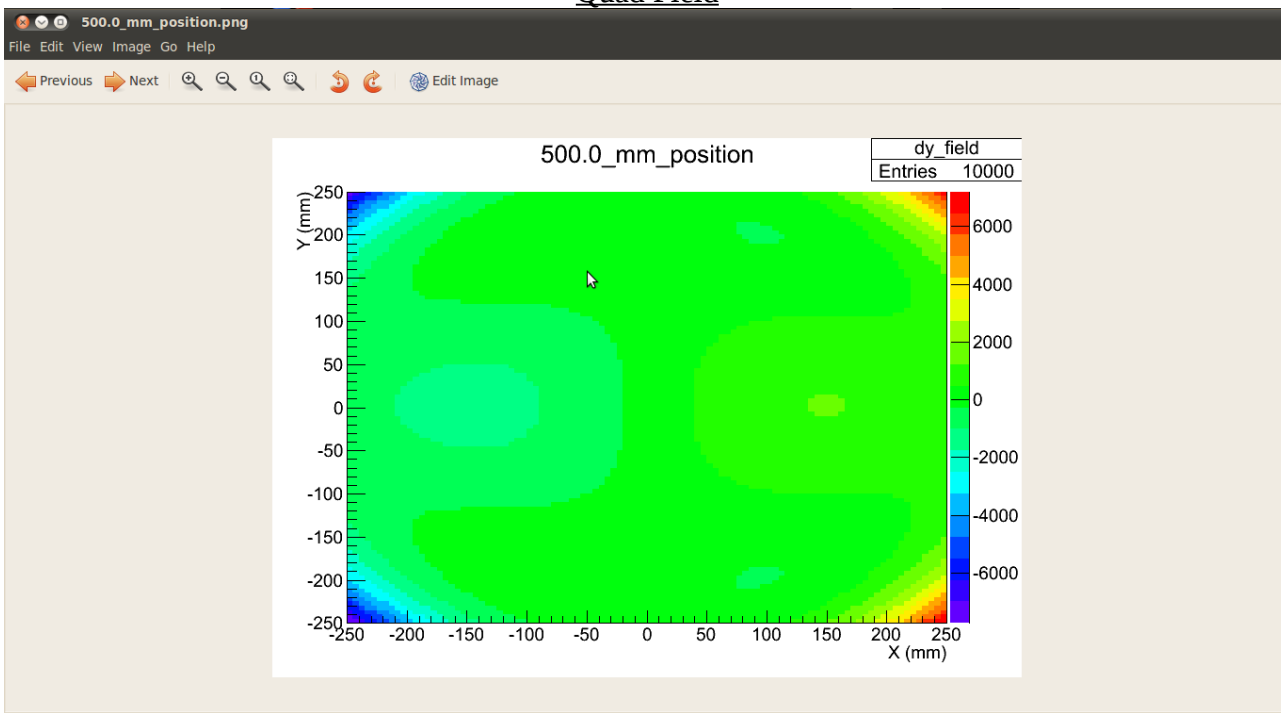


Dipole Field





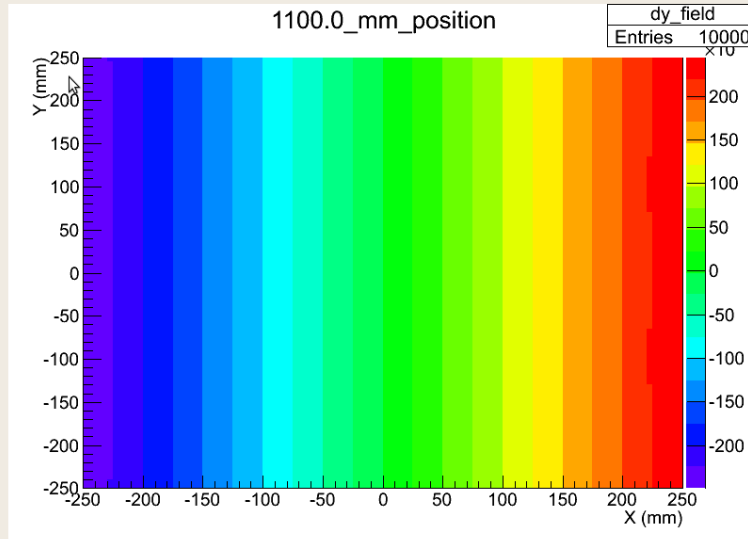
Quad Field



1100.0_mm_position.png

File Edit View Image Go Help

Previous Next [Zoom icons] Edit Image

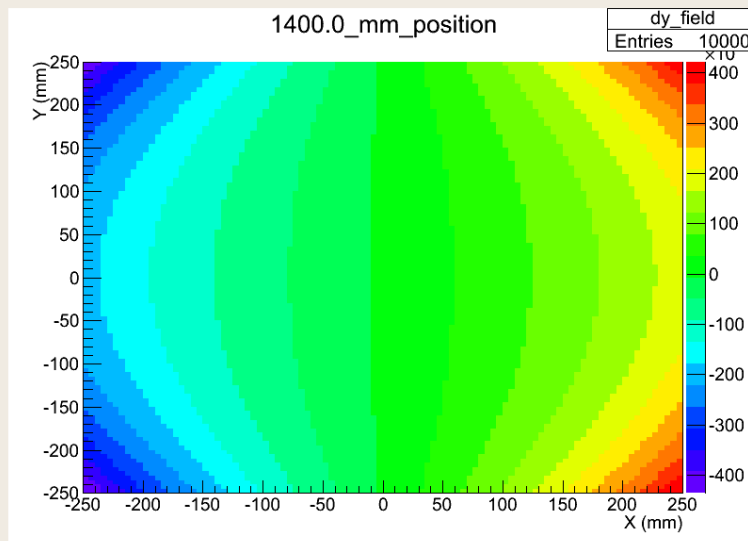


1400.0_mm_position.png

File Edit View Image Go Help

Previous Next [Zoom icons] Edit Image

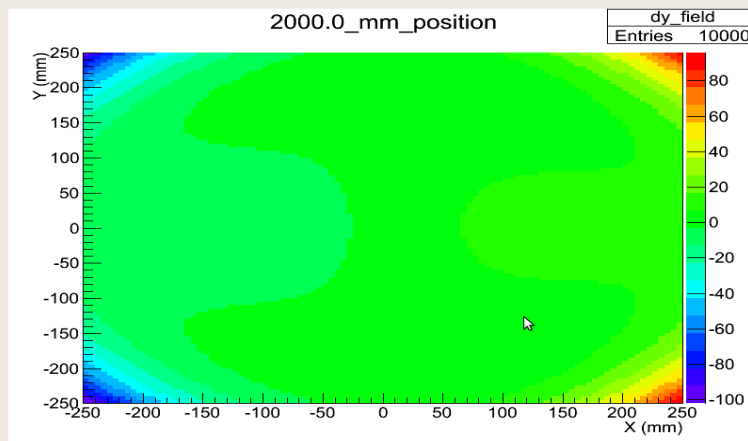
Go to the next image of the collection



2000.0_mm_position.png

File Edit View Image Go Help

Previous Next [Zoom icons] Edit Image



Problems?

