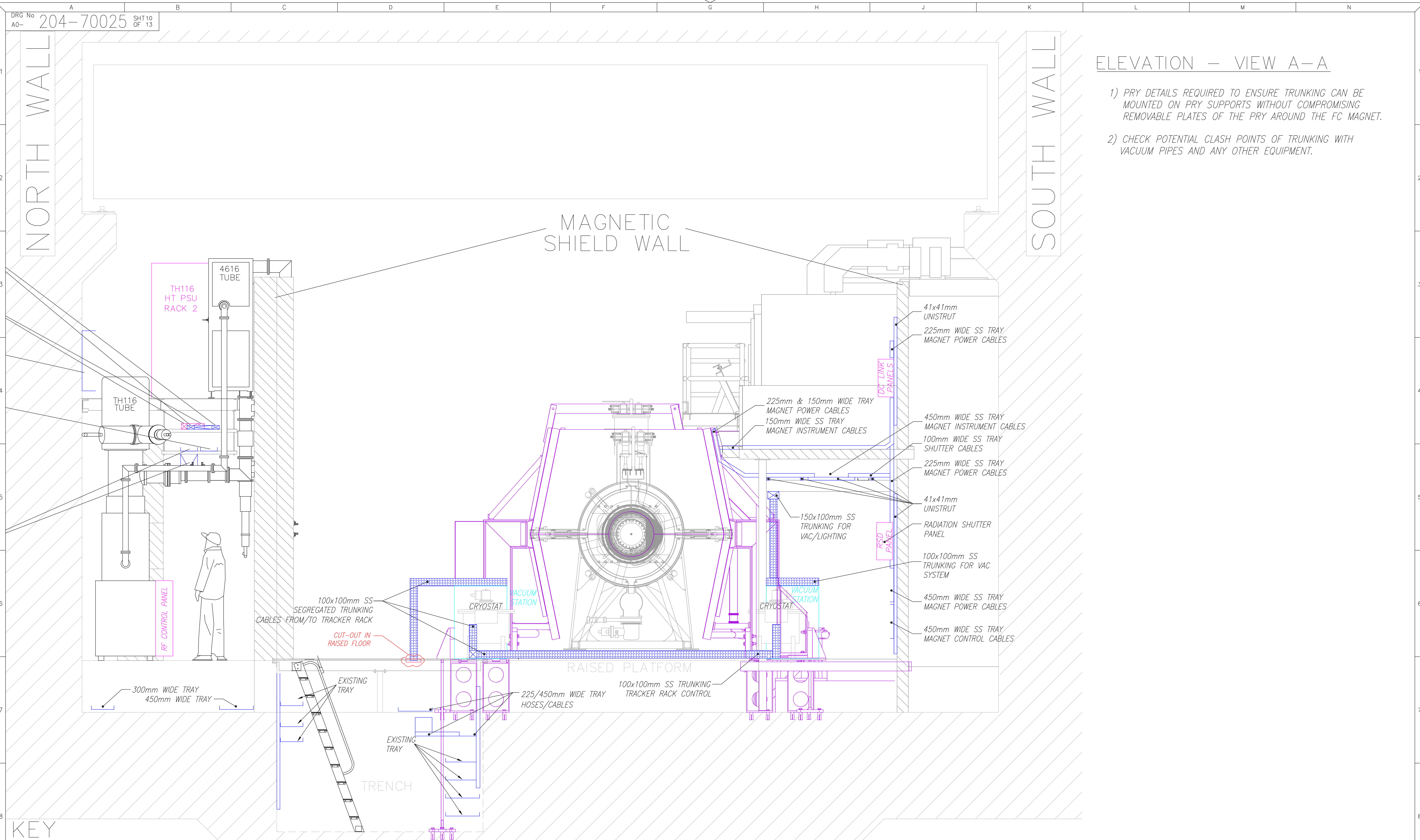


ELEVATION - VIEW A-A

- 1) PRY DETAILS REQUIRED TO ENSURE TRUNKING CAN BE MOUNTED ON PRY SUPPORTS WITHOUT COMPROMISING REMOVABLE PLATES OF THE PRY AROUND THE FC MAGNET.
- 2) CHECK POTENTIAL CLASH POINTS OF TRUNKING WITH VACUUM PIPES AND ANY OTHER EQUIPMENT.



KEY

- TRAY/TRUNKING INSTALLED UNDER RAISED FLOOR
- RAISED FLOOR/FLOOR DUCTS
- ▨▨▨▨ TRUNKING INSTALLED ABOVE RAISED FLOOR
- CONTROL/PSU RACKS
- CUT OUT IN RAISED FLOOR
- PARTIAL RETURN YOKE (PRY)

A	FIRST ISSUE	DRN: JWW DATE: AUG 14 APPD: [Signature]	C	VISUAL INSPECTION OF MICE HALL: - 450 WIDE TRAY MOVED. SUMITOMO COMP'S TRUNKING ROUTES UPDATE.	E	COMPRESSOR HOSE ROUTES UPDATED DUE TO REPOSITIONING OF COMPRESSORS. TRENCH TRAY SIZE CHANGED.
B	INFRASTRUCTURE MEETING UPDATE: 450 WIDE TRAY MOVED. SUMITOMO COMP'S TRUNKING ROUTES UPDATE.	DRN: JWW DATE: OCT 2014 APPD: [Signature]	D	TRAY/TRUNKING, FLOOR CUT-OUTS AND PANEL LOCATIONS AS INSTALLED	F	

SCALE		0	
ALL DIMENSIONS IN MILLIMETERS UNLESS OTHERWISE STATED			
DRN	JWW	SCIENCE AND TECHNOLOGY FACILITIES COUNCIL	
DATE	MAY 2014	DARESBUURY LABORATORY	
CKD		CHESHIRE	
DATE		TITLE	
CERT		MICE HALL	
DATE		EQUIPMENT, TRAY & TRUNKING	
APPD		POSITION LAYOUTS	
DATE		DRG No	ISSUE
		A0-204-70025	SHT 10 OF 13
		CAD PART No	204-70025_10
DRAWING LIST: - 204/70000			
CONTRACTORS COMPANY			
CONTRACTORS DRG No			